



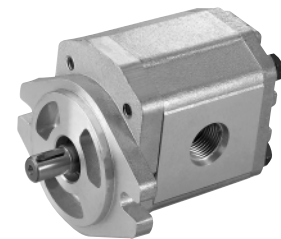
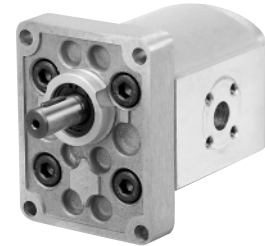
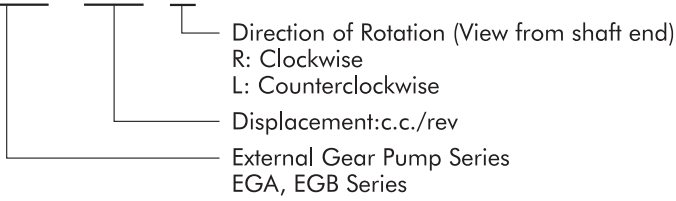
EGA / EGB Series External Gear Pump

Features:

1. High pressure and high efficiency applicable to all kinds of machines.
2. Special gear design, low noise, agreeable to low-noise requirement.
3. Aluminum alloy, gravity casting body. Light weight and Sturdiness.
4. Standard SAE flange.

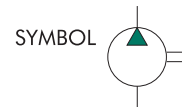
HOW TO ORDER

EGA - 4.3 -R



TECHNICAL DATA

Model No.	Theory Displacement cm ³ /rev	Maximum Working Pressure kgf/cm ²	Dimension		In/Out Port Dimension		Weight kg
			A	B	In	Out	
EGA-1.2	1.2	210	37.8	75.5	10	10	1.0
EGA-1.7	1.7	210	38.5	77	10	10	1.0
EGA-2.2	2.2	210	39.5	79	10	10	1.0
EGA-2.6	2.6	210	40.5	81	10	10	1.1
EGA-3.2	3.2	210	41.5	83	12	12	1.1
EGA-3.8	3.8	210	42.5	85	12	12	1.2
EGA-4.3	4.3	210	43.5	87	12	12	1.2
EGA-6.2	6.2	210	47	94	12	12	1.3
EGA-7.8	7.8	190	50	100	12	12	1.4
EGB-4	4.0	210	52.5	98	1-1/16-12U	7/8-14U	2.5
EGB-6	6.2	210	54	101	1-1/16-12U	7/8-14U	2.6
EGB-8	8.4	210	56	105	1-1/16-12U	7/8-14U	2.7
EGB-11	11.0	210	58	109	1-1/16-12U	7/8-14U	2.8
EGB-14	14.3	210	61	115	1-1/16-12U	7/8-14U	3.0
EGB-16	16.5	210	63	119	1-1/16-12U	7/8-14U	3.1
EGB-19	19.5	210	65.5	224	1-1/16-12U	7/8-14U	3.3



Remark: Maximum working pressure here shows for single pump operation.

DIMENSIONS:

UNIT: mm

EGA

EGB

